

## LASER CLEANER MACHINE

Model : SLC 60F / SLC 100F



Model : SLC 200F / SLC 450F

**Laser cleaning equipment** is a new type of high-tech surface treatment products that integrate laser, software, hardware and control.

The system can effectively clean the surface of the object. Compared with traditional cleaning methods, laser cleaning has no pollution.

Dyeing, no loss, high efficiency, which can meet various applications such as degreasing, rusting, paint removal, and coating removal on the surface of objects demand.

The equipment has been specially adjusted for tire mold cleaning applications with professional parameters and process adjustments, which can be quickly.

Efficient cleaning does not hurt the mold substrate. The company also provides automatic and semi-automatic tire mold cleaning equipment, combining Robot, automation, machine vision and other technologies, without the need for manual participation throughout the process, complete a full set of mold cleaning automatically.

Mold Cleaning



Paint Removal



Pretreatment



Rust Cleaning



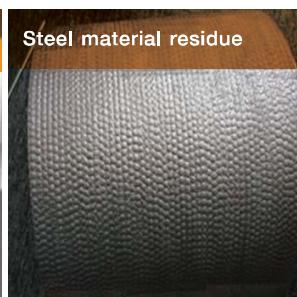
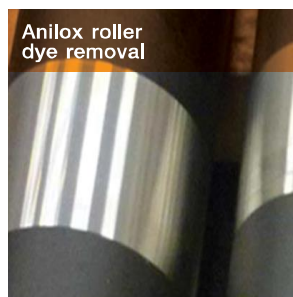
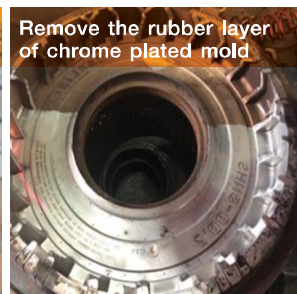
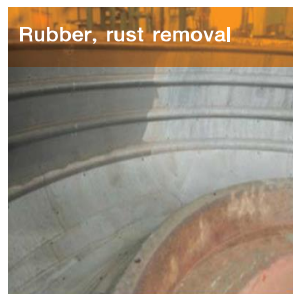
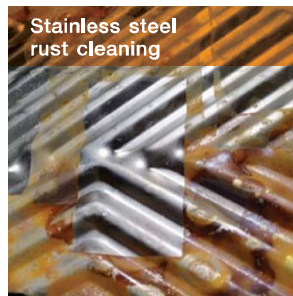
### LASER CLEANER MACHINE

#### Application

- Rubber mold rubber residue removal
- Pre-treatment before welding / cleaning after welding
- Metal surface oil stain, rust residue cleaning
- Paint removal on metal surfaces
- Surface coating removal
- Removal of pigment and ash layer on the surface of cultural relics
- Metal surface rust removal

#### Features

- Non-contact, no damage to the substrate
- Adjustable parameters, high cleaning efficiency, save time
- No chemical cleaning fluid, no consumables, safe and environmentally friendly
- Low operating cost and maintenance-free
- Simple operation, can be hand-held or automatically cleaned with the robot

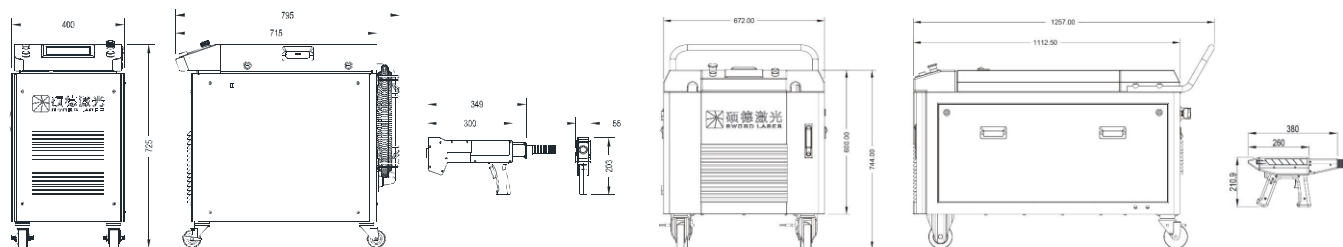


#### Comparative items

	Chemical cleaning	Sand blast cleaning	Dry ice cleaning	Ultrasonic cleaning	Laser cleaning
Cleaning method	Chemical agent	Grit	dry ice	detergent	laser
	Contact	Contact	Contactless	Contact	Contactless
Workpiece damage	Yes	Yes	No	No	No
Cleaning efficiency	Low	Medium	Medium	Medium	High
Consumables	Chemical cleaning agent	Grit ,sand,plastics	Dry ice	Special cleaning agent	Electricity
Cleaning effect:	General, uneven	clean	excellent,uneven	excellent, small range	high cleanliness
Safety / Environmental	Polluted Environment	Polluted Environment	Pollution	No Pollution	No Pollution
Manual operation	Miscellaneous and the operator high requirements	Labor-intensive, need to prevent Big noise and serious dust	Simple operation by hand or automation support	The operation is simple, but Need to add manually consumables ( chemical )	Easy to use by Handheld or automatic
Cost input	The first investment is low,High cost of consumables	Consumables and labor costs high	First investment and consumable cost high	Low investment for the first time,Consumables cost is moderate	First investment High, no consumption and maintenance Low



## LASER CLEANER MACHINE



### Specification

Model	SLC-60F	SLC-100F	SLC-200F	SLC-450F
Cooling	Air Cooling		Air / Water Cooling	
Laser Power	60 W	100 W	200 W	500 W
Laser Wavelength	1064 nm.			
Mode	Manual/Semi-Auto/Auto/Robot			
Scan Width	70 mm			
Working Distance	300 mm			
Fiber Length	3 Meters			10 Meters
Weigth	Laser Head : < 2.5 kg.			
	50 kg	60 kg	100 kg	200 kg.
Scan Freq	50 - 400 Hz			150 - 600 Hz
Power	220 VAC/600 W	220 VAC/1000 W	220 VAC/1800 W	220 VAC/2500 W
Dimensions	795 x 400 x 725 mm		1257 x 672 x 744 mm.	
Operating Conditions	Temperature: 5 - 40 C; Humidity : 10% - 80%, Non-codensing			

